



**MIDLAND COUNTY
FOOD ASSISTANCE
NETWORK**

Midland Unites to Fight Hunger: A Recap of Canstruction Midland 2024

It takes a community to help end hunger and spread awareness about food insecurity, and our hometown proved just that! On November 6, 2024, Midland's youth and community sponsors came together for a heartwarming event, showcasing the power of collaboration for a great cause. Canstruction Midland brought together high school and middle school students from eight local schools to compete in an exciting and impactful challenge. Using STEAM principles, the students created stunning sculptures entirely out of food items, proving that "one CAN make a difference." The results were truly inspiring: 13,000 cans of food were donated to the Midland County Food Assistance Network (MCFAN). With MCFAN distributing approximately 12,000 items per month, this incredible contribution will sustain the network's efforts for over a month!

Thank you to everyone who contributed to this event. Let's continue to make strides in the fight against hunger!

PLATINUM SPONSORS



Colin and Kerry Buell

Mike and Susie Staloch Robert and Jean Julier Rich and Denise Helling

GOLD SPONSORS

Orvosh Builders

Linked Technology

Mr. and Mrs. Bill Schmidt Andy Ault Members First Credit Union

SILVER SPONSORS

United Church of Christ

Yeo & Yeo

DCK Book Keeping

GROCERS

Kroger

Family Fare

Meijer

LaLondes

ADDITIONAL SPONSORS AND SUPPORT

Hidden Harvest

Midland Public Schools

RiderTyper and Design

Subway

Hungry Howies

Home Depot

Technical Award (High School)

Mission 'Can'trol Rocketship

Built by: Rogue Robots

From: Christian Home Educators of Midland (High School)

Team Members: Aiden Mayes, James Fanning, Megan Oatley, Luke Gam, Levi Cardinal, August Williams, Jayden Wahl, Christian Cole, Liam Remy, Isabel Molitor

Coach: Karen Lehman



Technical Award Honorable Mention (High School)

The Choo Choo Train

Built by: The conductors

From: Midland High School

Team Members: Elizabeth Fosgard, Ivy Kickland, Anna Martinson, Claire Reinhardt, Tega Kamotoy

Coach: Barb Kosick



Best Meal

Dumpinator

Built by: Dump Truck Dream Team

From: St. Johns Lutheran Middle School

Team Members: Ashely Brown, Hannah Lewis, Sophia Wasson, Addie Allen, Regan Martin, Gabe Martin, Alexis Zissler

Coach: Larry Elliot



Most Cans

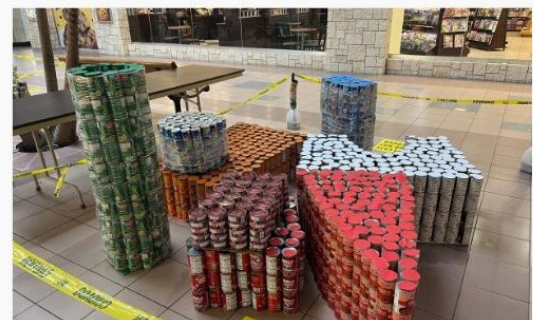
Bold Building Blocks

Built by: 'Block'heads

From: Windover High School

Team Members: Samm Taylor, Carrie Cutshall, Magnolia Retana, Fynn Owens, Mackenzie Lytikainen

Coach: Dana Draper-Rosin



canstruction® Additional Entries



People Choice

Built by: The Sketchers

From: Jefferson Middle School

Team Members: Khloe Warren, Beau Schafer, Lily Kelly, Katie Stachowiack

Coach: Jacob Scherzer



The Doll House

Built by: The Dow High Dolls

From: Dow High School

Team Members: Jenna Remacle, Olivia Jezewski, Tanner Witzke, Tyler Witzke, Abby White, Madalyn Blohm, Isabela Harmon

Coach: Sarah Votruba



All Aboard

Built by: The Conductors

From: Bullock Creek High School

Team Members: A Jenae DeAndrade, Makenna TerBush, Hannah Krotzer, Addyson Laplow, Jorja Urbain, Grace Hughes, Delany Waters

Coach: Dana Murray



3,2,1 Blast Off!

Built by: Viking Voyagers

From: Northeast Middle School

Team Members: Addison Temple, Ella Kociba, Grace Pung, Gabby Murray, Fletcher Keyes, Alexandra Martinson, Ari Benedict, Journey Cruz, Nora Lonsway, Charlie Haney

Coach: Barb Kosick

P.O Box 2521
Midland MI 48641-2521

Midland County Food Assistance Network Locations

Bullock Creek Outreach Pantry
at Messiah Lutheran Church
1550 S. Poseyville Rd.
989-631-5200

Greater Midland Coleman
Family Center
4839 N. Coleman Schools Dr.
989-486-9393

Wheeler Road Church
of Christ
1123 E. Wheeler St.
989-835-8559

Greater Midland North
Family Center
2601. E. Shearer Rd.
989-689-7770

HEP Pantry at Memorial
Presbyterian Church
1310 Ashman St.
989-835-6759

SAMS Pantry
hosted by
St. Johns Episcopal
503 S. Saginaw Rd.
989-631-2260

Sanford Pantry at Sanford
United Methodist Church
2560 N. West River Rd.
989-687-5353

West Midland Family Center
4011 W. Isabella Rd.
989-832-3256

MCFAN Warehouse
503 S. Saginaw Rd.
989-486-9393

Learn More



IF YOU ARE IN NEED OF FOOD, PLEASE CALL: (989) 486-9393 PRESS 1

MIDLAND COUNTY FOOD ASSISTANCE NETWORK



NOVEMBER 2024

OUR MISSION:
ALWAYS FOOD IN EVERY HOME

Season's Greetings from Midland County Food Assistance Network (MCFAN)

As we gather to celebrate the warmth and joy of the holiday season, we are reminded that for many in our community, the holiday table will be empty. Food insecurity affects 9,530 families in Midland County, and at MCFAN, our mission is to ensure **"Always Food in Every Home."**

This year, the USDA reported a troubling increase in food insecurity, with **13.5% of U.S. households—or 18 million families—struggling to access enough nutritious food.** This marks the second consecutive year of rising food needs, a concerning trend fueled by limited resources and economic pressures. For food-insecure households, this means disrupted eating patterns and the painful choice between necessities like heating their homes or putting food on the table.

At MCFAN, we believe no one should face this choice. With your support, we can make a tangible difference.

Here's how you can help:

- **Make a Donation** – Every dollar you give goes further through our partnership with the Food Bank of Eastern Michigan.
- **Sponsor a Mobile Food Giveaway** – For just \$700, you can provide meals for 250 families through a mobile food distribution.
- **Hold a Food Drive** – Schools, offices, and clubs can organize food drives to support our local pantries.
- **Volunteer Your Time** – We welcome volunteers of all ages and abilities—there's a role for everyone!
- **Spread the Word** – Share our mission with family, friends, and networks to help us reach more people in need.

Every contribution helps meet the pressing need and builds resilience within Midland County. Together, we can create a community where no one has to wonder where their next meal will come from.

Please join us this holiday season in extending hope and nourishment to our neighbors. Your generosity has the power to transform lives, not just for the holidays, but well into the future.

Wishing you and your loved ones a season filled with peace, joy, and love.

Terrah Johnson, managing director

